



## The 12 Weeks of Christmas – Week 11 – Easy Gift/Treat Bag

Stamp Set: Wrapped in Christmas (#153481 \$22)

Cardstock: Real Red

Whisper White

Designer Paper: Poinsettia Place (#153487 \$11.50)

Accessories: Real Red Satin Ribbon (#151115 \$7.50)

White Bakers Twine (retired/non-SU)

Stampin' Dimensionals (#104430 \$4)

Tools: Stampin' Cut & Emboss Machine (#149653 \$120)

Ornate Frames Dies (#150664 \$34)

¼" Circle Punch (retired/non-SU)

Simply Scored: (#122334 \$30)

Dimensions: Designer Paper: 6" x 6"

Real Red & Whisper White cardstock:

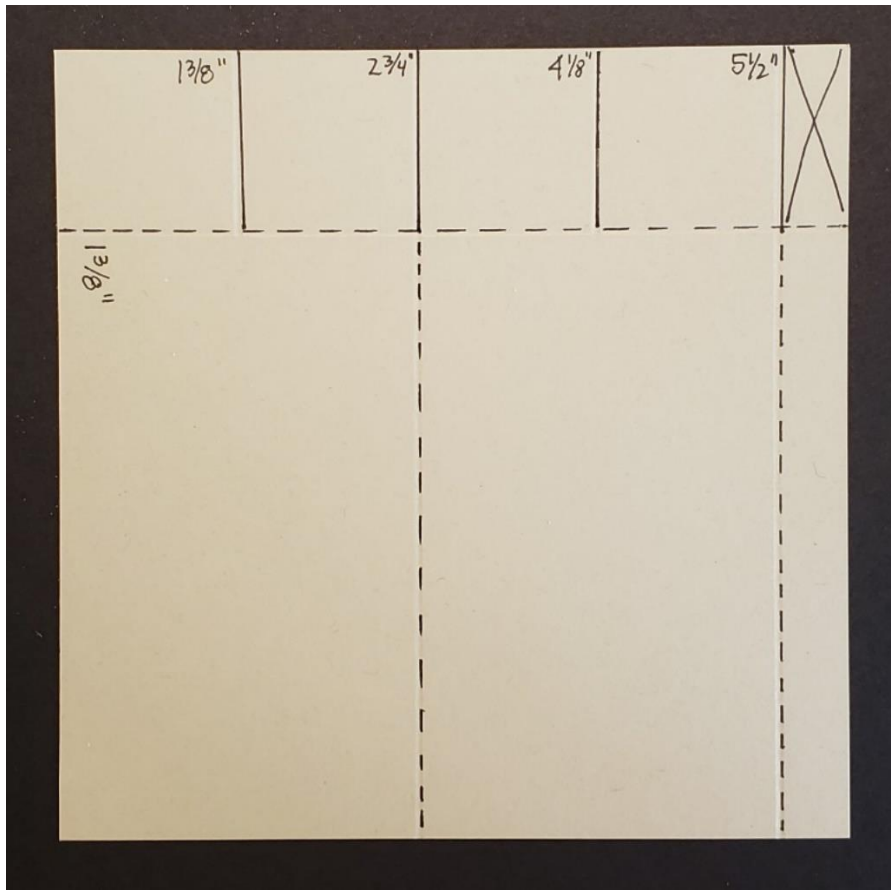
Scraps

Ribbon: 6" (2x)

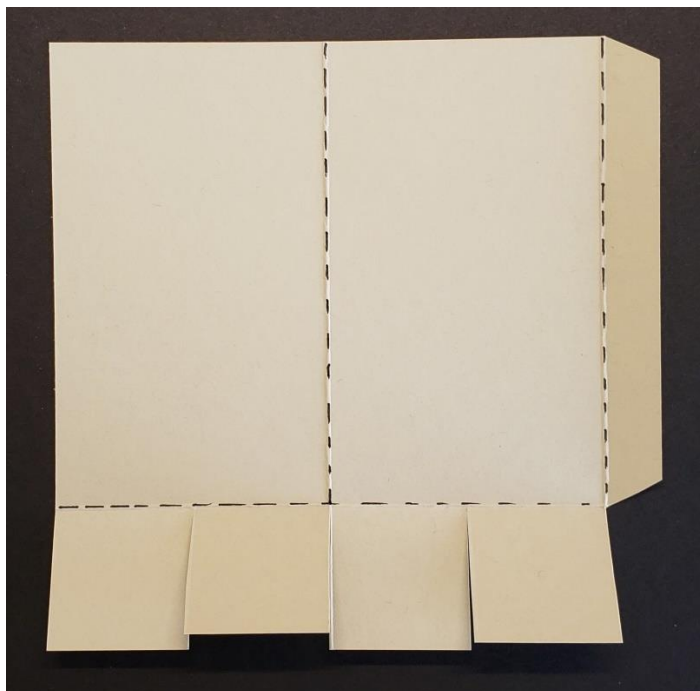
Baker's Twine: 8 ½"

1. Place the designer paper in the corner of the Simply Scored. Score at 1 3/8".
2. Turn the designer paper clockwise. The line you just scored should be near the top of the Simply Scored.
3. Score at 1 3/8" only down to the horizontal score line.
4. Score at 2 3/4" the whole length of the paper.
5. Score at 4 1/8" only down to the horizontal score line.
6. Score at 5 1/2" the whole length of the paper.

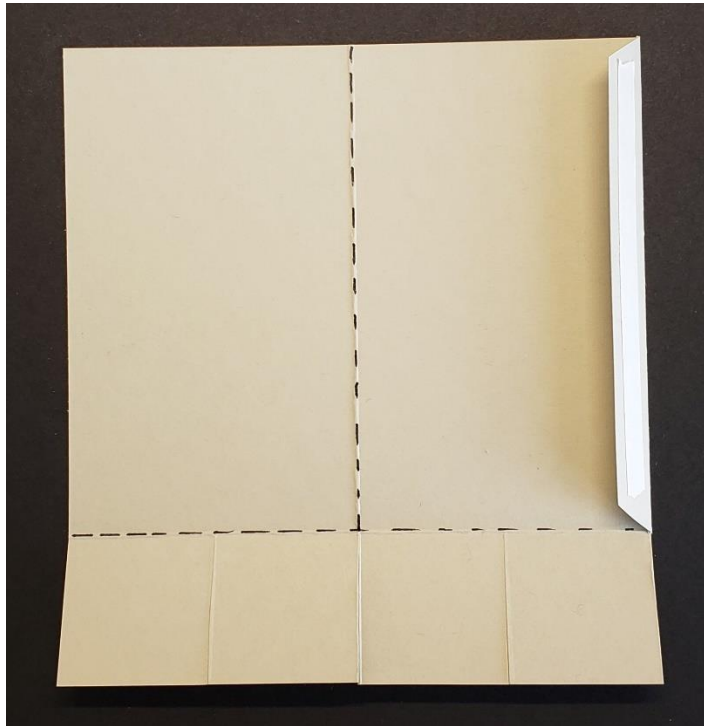
(continued on next page)



7. Fold along the horizontal score line and the two long vertical score lines.
8. Cut along solid lines to score line.
9. Cut out small corner with an X in it.
10. Flip the designer paper so that the narrow 1/2" flap is on the right and the horizontal score line is at the bottom.



11. If desired, trim the corners on the narrow flap.
12. Fold the narrow flap in towards the center. Place adhesive on flap.



13. Fold the left side over to adhere to the small flap.



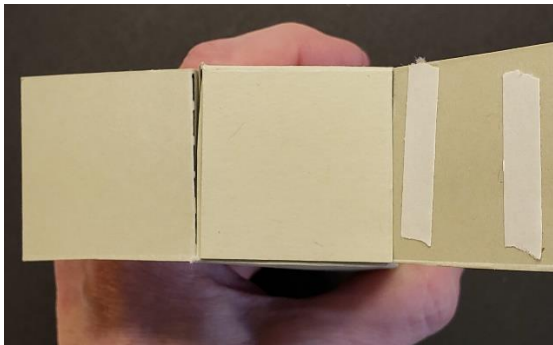
14. To assemble the base of the bag/box lift up the top two flaps. Now place adhesive on the bottom two flaps.



15. Squeeze the two sides together so that the bottom forms a square.

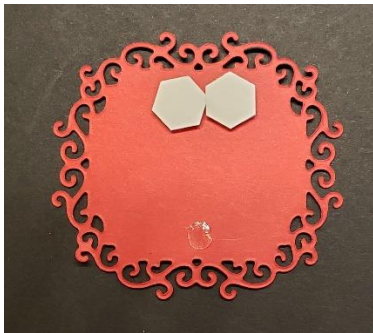


16. Fold in one of the flaps that doesn't have adhesive on it. Now fold over the opposite flap that does have adhesive on it. Repeat with other two flaps.





17. Your little gift bag/box is complete. Simply decorate!
18. Stamp the sentiment on scrap of Whisper White cardstock with the Real Red ink. Die cut.
19. Die cut ornate frame.
20. Adhere sentiment to frame.
21. Punch a hole in the top of the bag/box with the ¼" Circle Punch.
22. Thread both pieces of ribbon through hole.
23. Wrap baker's twine around ribbons and tie in a bow.
24. Trim ribbons.
25. Place two Stampin' Dimensionals in the top, mid-center of the ornate frame. Place a Mini Glue Dot on the bottom, mid-center of the frame. Since the front of the bag/box is angled, you only want the dimensionals at the top so that the label will be straight/flat when you adhere it.



26. Adhere ornate frame to front of bag/box.

See a couple of different angles of the bag/box on the next page:



Created By  
Cindy Russell  
[www.stampbystampcreations.com](http://www.stampbystampcreations.com)  
all images © Stampin' Up!



Created By  
Cindy Russell  
[www.stampbystampcreations.com](http://www.stampbystampcreations.com)  
all images © Stampin' Up!