

Snowflake Splendor Wine Bottle Cover by Cindy Russell



Supplies:

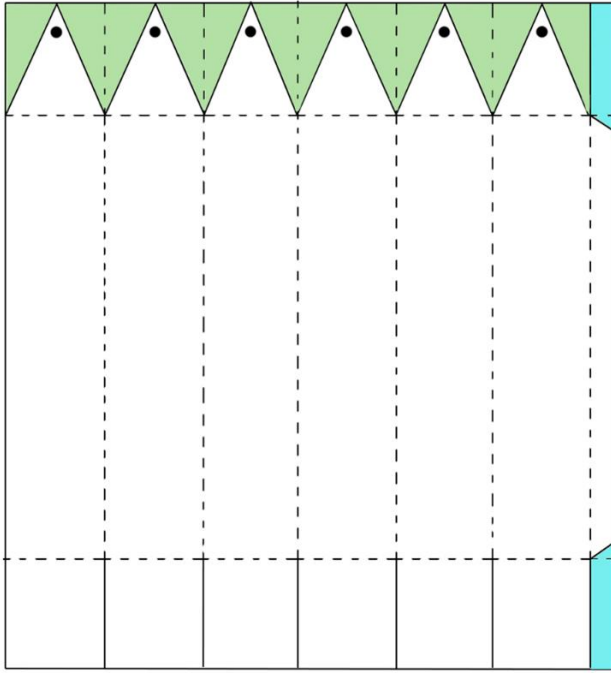
Cardstock: Whisper White 12" x 12" (#124302 \$7.75)
Whisper White (#100730 \$9.75)
Designer Paper: Snowflake Splendor (#153512 \$11.50)
Accessories: Whisper White Crinkled Seam Binding (#151326 \$7.50)
Rhinestone Basic Jewels (#144220 \$5)
Stampin' Seal + (#149699 \$12)
Tools: Stampin' Cut & Emboss Machine (#149653 \$120)
Little Treat Box Dies (#153571 \$38)
So Many Snowflake Dies (#153560 \$36)
Layering Circle Dies (#151770 \$35)
Simply Scored (#122334 \$30)
¼" Hole Punch (retired/non-SU)

Dimensions:

Whisper White: 12" x 12", 2 ½" x 3 ½",
3 ½" x 3 ½", scrap
Designer Paper: 1 ½" x 7 ¾" (6x),
2 1/8" x 1 5/8"
Ribbon: 24", 12"

Directions:

1. Trim the 12" X 12" piece of Whisper White cardstock to 11" x 12".
2. With the 11" side of the cardstock at the top of the Simply Scored, score at 1-3/4", 3-1/2", 5-1/4", 7", 8-3/4", and 10-1/2".
3. With the 12" side of the cardstock at the top of the Simply Scored, score at 2" and 10"
4. Place the cardstock in the original position in front of you with the 11" side of the cardstock at the top. Make sure the section that is ½" is on the right. Make a small pencil mark at the top edge at 7/8", 2-5/8", 4-3/8", 6-1/8", 7-7/8", and 9-5/8".
5. In each of the top sections you are going to want to draw a triangle as shown in the diagram below.



6. Before cutting the triangles make a mark about $\frac{5}{8}$ " down from the original pencil mark in each section to mark where you want your hole punched. Punch the holes. If you are using a narrower ribbon you may want to use a small punch for the holes. The ribbon should slide through the holes easily as you need to "open" the top to get the wine out.
7. Once your holes are punched fold the cardstock well along all score lines.
8. Cut your triangles in the top section.
9. Cut out the upper & lower right sections of the cardstock as shown in the blue areas of the illustration above.
10. In the lower section of the cardstock cut along score lines up to the horizontal score line as shown by the solid lines in the above illustration.
11. Erase all remaining pencil marks.
12. Adhere designer paper panels to the cardstock.
13. Run the Stampin' Seal + in the $\frac{1}{2}$ " section. Flip over the cardstock and fold over a section or two so the adhesive is facing up. Fold over the other panels so that the outer panel adheres to the adhesive.



14. To make the bottom of the cover you will want to first insert a wine bottle. This will help make the bottom flaps line up straighter.
15. You will line up opposite flaps and adhere them. On the first two flaps only place adhesive on the inside of one flap. The other flap will be against the wine bottle on the inside of the cover so you don't want adhesive on it. Make sure that the opposite flaps line up straight so that your cover won't be lopsided. Rotate and repeat for the other two sets of flaps. You will place adhesive on both flaps after the first set of flaps.



16. Die cut a circle from the square piece of Whisper White cardstock using the largest Layering Circle Die. Adhere die-cut circle to the bottom of the wine bottle cover to make it a little sturdier.
- 17.



18. Cut a 24" piece of ribbon.
19. Figure out which part of the wine bottle cover you want to be the front. Starting with this section, thread the ribbon through the punched hole of the triangle going front to back. Turn the bottle counter-clockwise and thread the ribbon through the hole in the next section, front to back. Repeat until ribbon is threaded through all holes.
20. Carefully tighten the ribbon around the neck of the wine bottle. You will want to do a little section at a time. Be sure to leave an equal amount of ribbon on each end to tie a bow. When the triangular flaps are tight against the neck of the wine bottle tie the ribbon in a bow. Trim ends of ribbon just a little bit. You want to leave long tails on the ribbon so the ribbon can be loosened to retrieve the wine bottle.



21. To make the tag die cut one of the scallop sections of the Little Treat Box from small piece of Whisper White cardstock. Trim tag along score marks.
22. Adhere the small piece of designer paper to the tag.
23. Die cut a snowflake from scrap of Whisper White cardstock and adhere to tag.
24. Adhere a medium Rhinestone Basic Jewel to the center of the snowflake.
25. Cut a 12" piece of ribbon. Thread through slot in tag. Tie ends together to form loop.
26. Loop tag ribbon over bottle neck.